



Basics of a plan



Ken Parker

Wildland Fire
Specialist

478-751-3332

Georgia Forestry
Commission

5645 Riggins Mill Rd

Dry Branch GA
31020



So what does it take to burn in Ga.?



Section 12-6-90. Permit required for burning woods, lands, marshes, or other flammable vegetation;

No where in the law does it say you must also have a burn plan.

So why do one?



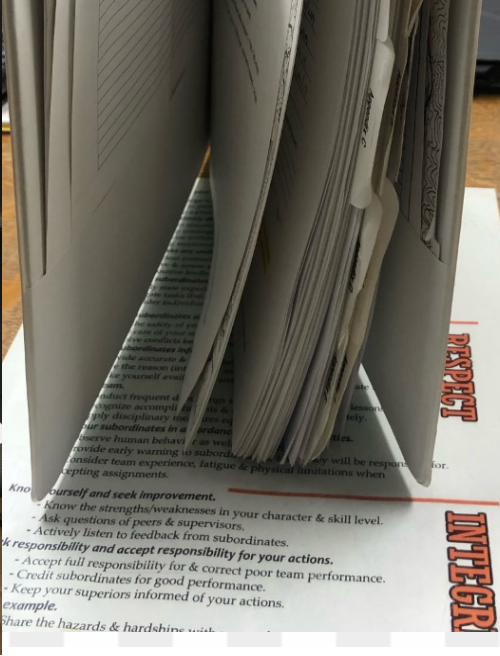
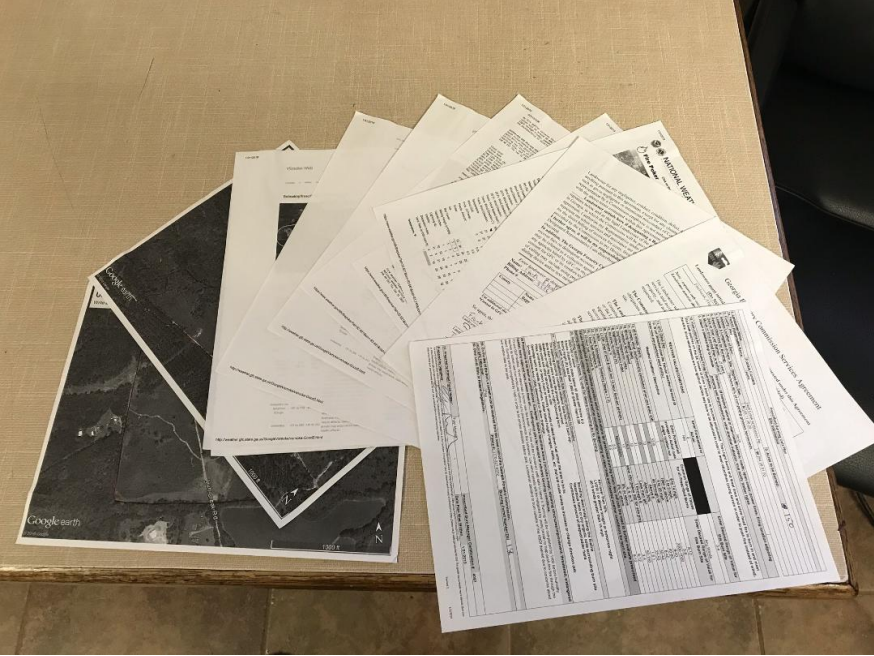
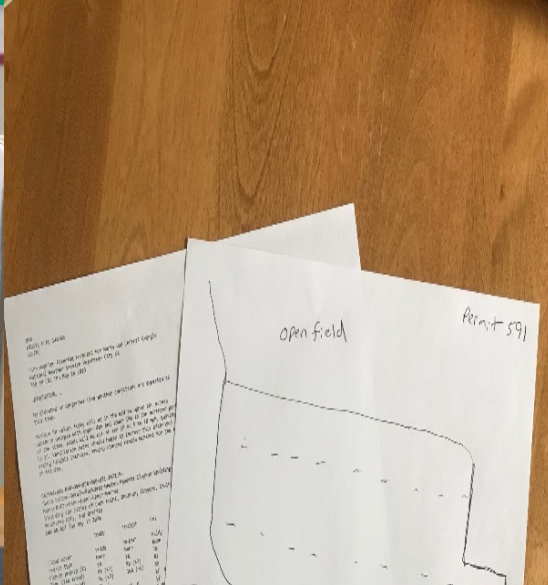
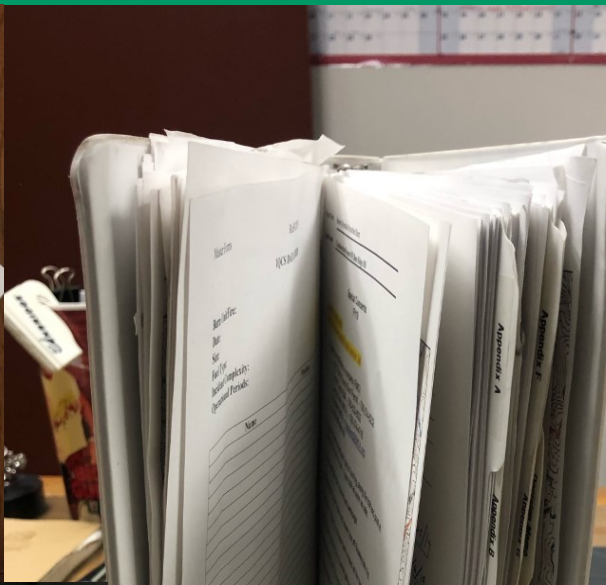
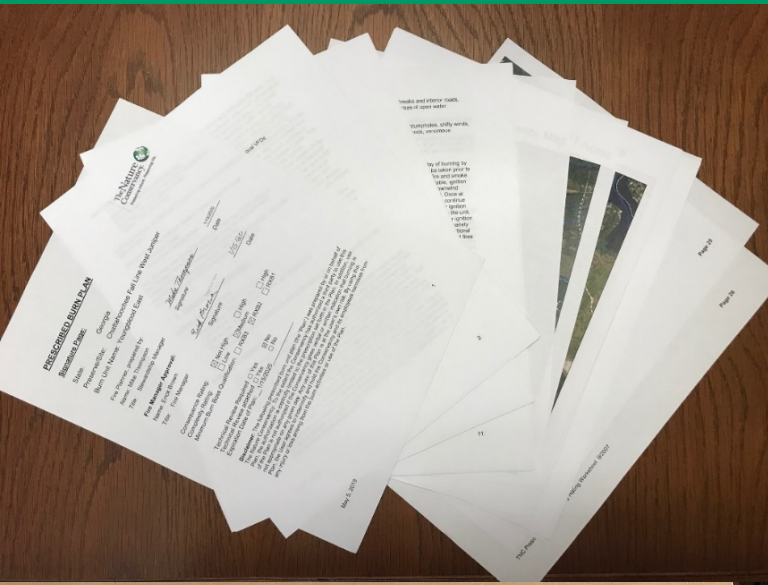
What is a plan?



1. An orderly or step-by-step conception or proposal for accomplishing an objective in one operational period.
2. A proposed or intended course of action.
3. To have a good plan you must have good knowledge of the property and the objective the landowner wants.



What does a RX plan look like?





What makes up a good burn plan?



A measurable Objective

A map

Firing operations for a one day burning block

Current days weather

Vsmoke or some other form of smoke modeling



The Objective

An objective is a thing aimed at or sought after; a goal.

You can't achieve your objectives unless people understand them.

An objective **MUST** be measurable.

The objective sets the tone and method for the entire burn and should be one of the first things identified when writing a burn plan.

Reduce leaf litter by 50%

Top kill 80% of hardwoods

Expose 70% of soil so that it will facilitate tree planting.

Remove 70 % of duff layer to allow grasses and Forbs to grow for wildlife.

Promote flowering of grass over 80% of stand.

The Map

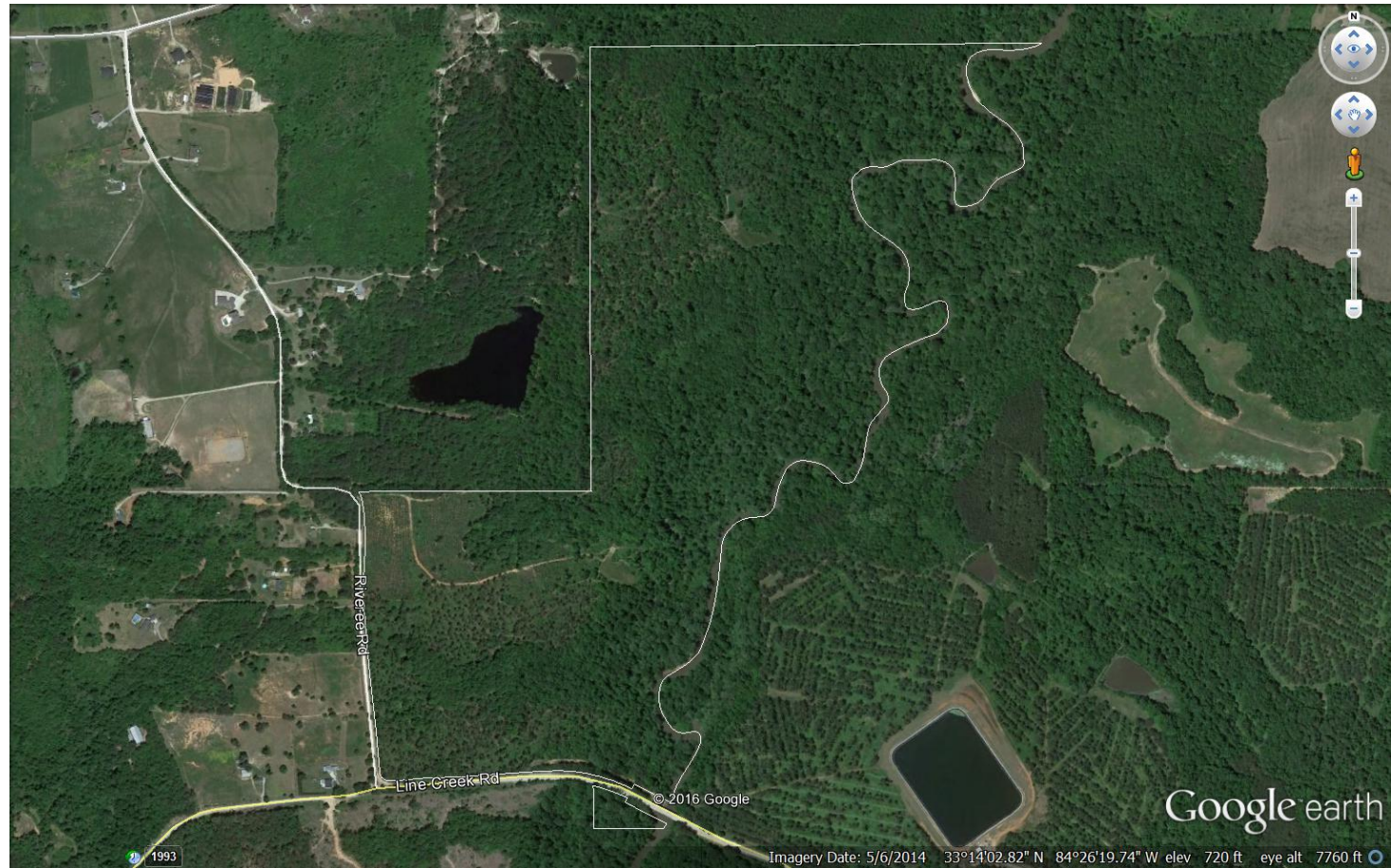
Fire lines; natural or man-made barriers; roads; open areas; power lines; firing locations, adjoining property and improvement; wind direction indicator; true north

Soils map

Topo map

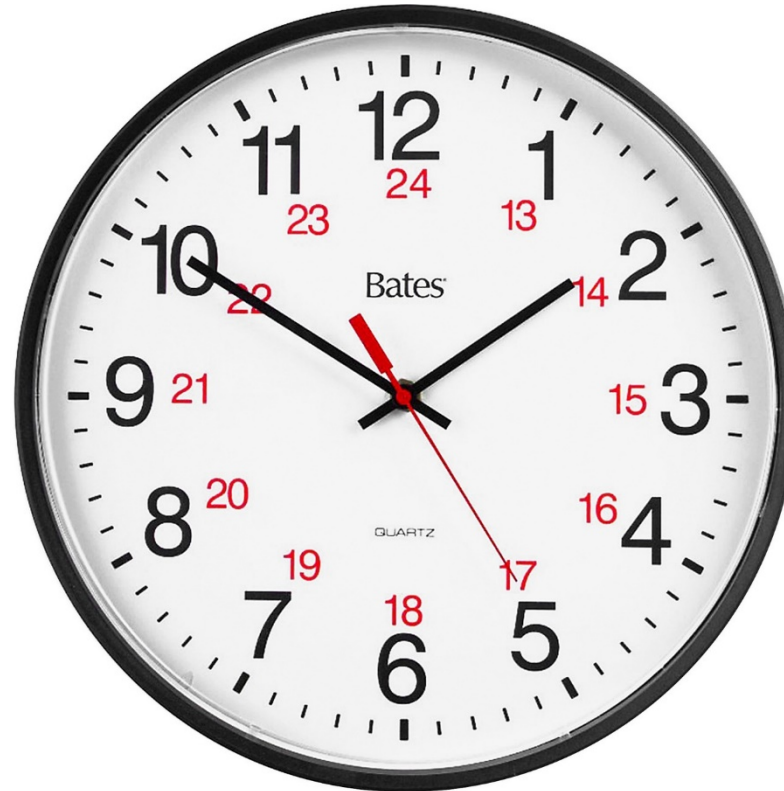
Good quality
aerial photo

Hand drawn





Firing Operations for one day burn block



Explain how you want the property ignited to meet the objectives that day under the forecasted weather.



Weather Condition/ Description

Weather Condition/ Description	Enter Forecasted/Actual (use single number-not range)	Common Range of Values for all Prescribed Burns	Enter Desired Range of Values for this Burn Site
13. 20 ft winds (Open)		8 to 14 mph	
14. Canopy Wind (automatically calculated)		5 to 8 mph	
15. Mixing Height (feet)		1650 or above	
16. Transport Wind Speed		9 to 20 mph	
17. Daytime Dispersion Index		40 through 90	
18. Nighttime Dispersion Index		Above 6	
19. Relative Humidity (%)		Above 30%	
20. Temperature *F		Less than 85*	
21. LVORI (day of burn and next two (2) 12 hour forecast periods)		1 through 6	
22. KBDI		Below 450 (below 550 for site prep burns)	
23. Turner & Atmosphere Tendency (Scale = 1-7)		3, 4, or 5	
24. 1 hour fuel moisture %		8% or above	
25. 10 hour fuel moisture %		8% or above	



Red Flags

26. Red Flag Weather Factors To Look For Before Conducting An Rx Burning

- KBDI 450 or above
- RH Lower than 30%
- Smoke Dispersion Index below 40 (day) and below 6 (night)
- LVORI 7 or above tonight or tomorrow night
- Mixing Height (ft.) less than 1,650 or greater than 6,500
- Surface winds greater than 15 mph
- Wind shift is forecasted (use GFC spot weather forecast - <http://weather.gfc.state.ga.us/PointForecast/index2.aspx>)



Watch Outs

27. “Watch Out” Situations and Site Specific Conditions to Consider

- The adjoining property contains wildland fuels that will burn rapidly
- Standing dead snags along the fireline
- More than 3 years since the property was burned
- Openings such as roads, power lines, timber stand height changes, fields, etc... that will cause winds to increase or change directions (eddy effect)
- Smoke Sensitive Area downwind or down drainage - use point/spot weather forecast
<http://weather.gfc.state.ga.us/PointForecast/index2.aspx>
- Hazardous fuels or dry organic soils surrounding burn site
- Moderate or high fog potential the night following burn
- Piles, windrows, or heavy fuels or heavy amounts of dead/ down fuel within the area to be burned.
- Continuous amount of draped/ladder fuels
- Utility poles and other structures on site



Precautions

Precautions to be taken or Justifications: Examples: Smoke Sensitive Areas(include a map); adjoining structures/improvement; threatened; endangered habitat; heavy adjacent fuels; power lines etc...Contingency plan for escape or adverse burning conditions.

This section is where you will list any areas that will be impacted by the prescribed fire; any areas of concerns and any precautions to consider. Anything that will need to be considered when creating your prescribe fire plan or individuals on the ground will need to know the day of the burn.

How are you going to mitigate the issues and the contingency plan if something goes wrong.

Put the details in so in case you are not the one to conduct the prescribed burn everyone will be familiar with your intent and concerns.

How do you know your plan worked?



The only way to know if your plan worked is to do a post evaluation, immediately after and then at a minimum a month or longer afterwards to see if you got the result you wanted.

Remember some results or consequences might not be seen for a year or more.



Post Evaluation



Under Achieve?



Post Evaluation



Over Achieve?



Post Evaluation



Met objectives?



A new look

1-800-GA-TREES | FIND YOUR LOCAL OFFICE | LAW ENFORCEMENT

RESOURCES | NEWS & EVENTS | ABOUT | CAREERS | CONTACT



FOREST MANAGEMENT & CONSERVATION

FIRE PREVENTION & SUPPRESSION

FOREST INDUSTRY

URBAN FORESTRY

HOME > FIRE PREVENTION & SUPPRESSION > PRESCRIBED BURN

PRESCRIBED BURN

[Burn Permits](#)

[Prescribed Burn](#)

[Prescribed Burn Certification](#)

[Prescribed Fire Advisories](#)

WILDFIRE

[Fire Weather](#)

[Wildfire Prevention](#)

[Pre-Suppression Firebreaks](#)

[Community Wildfire Protection Plan](#)

[Emergency Response](#)

[Incident Command System](#)

[Georgia Wildfire Public Viewer](#)

PROGRAMS

[Firewise USA® Program](#)

[Rural Fire Defense Lease Program](#)

[Smokey Bear](#)

FIREFIGHTING

[Firefighting Training & Resources](#)

[Arson Investigations](#)



F
B
ex
op
es
ec
ca
Fi



Resources for planning your burn

TITLE	DESCRIPTION	DOCUMENT TYPE
Daily Fire Danger Rating Map	Daily updates of fire risks across Georgia	External Website
Fine Fuel Moisture Table	A close estimate of the fine dead fuel moisture (FDFM) on your burn unit any time a FDFM reading is desired	PDF
Fire Weather Forecast	Current Fire Weather Forecasts and current National Fire Danger Ratings by GFC Areas	External Website
Georgia Prescribed Burn Laws	Prescribed Burn Laws from the Official Code of Georgia, Section 12-6-90 and Sections 12-6-145 through 12-6-149	External Website
Georgia Prescribed Fire Council	Council for prescribed fire advocacy across the state	External Website
Introduction to Prescribed Fire in Southern Ecosystems	Helpful resource for managers to plan and execute prescribed burns in Southern forests and grasslands	PDF
Prescribed Burn Certification Affidavit Form		PDF
Prescribed Burn Plan	A resource for all GFC personnel when conducting prescribed burn assistance for landowners and when conducting prescribed burning on GFC owned lands	PDF
Prescribed Burning Brochure	Overview of best practices for preparing a prescribed burn plan	PDF
Prescribed Fire – Sprewell Bluff Natural Area	Overview of a prescribed fire near Thomaston, GA conducted by members of an inter-agency burn team	Video
Prescribed Fire Certification Training (Buena Vista – April 2020)		PDF



Questions

