

Western NC Wildfire Overview

“A Look at 2016”





The Perfect Storm

- La Nina effect
- Persistent Drought Conditions in the western portions of the state
- Record fire danger indices
- Leaf fall
- Changing Tactics
- Came on the heels of Hurricane Matthew



Impacts

- 28 Significant Fires
- 12 Incident Management Teams deployed
- Over 3,000 personnel engaged in suppression efforts on a daily basis during the peak of the event.
- 60,000+ acres burned
- Estimated cost \$52 million



Tellico Fire





Camp Branch Fire

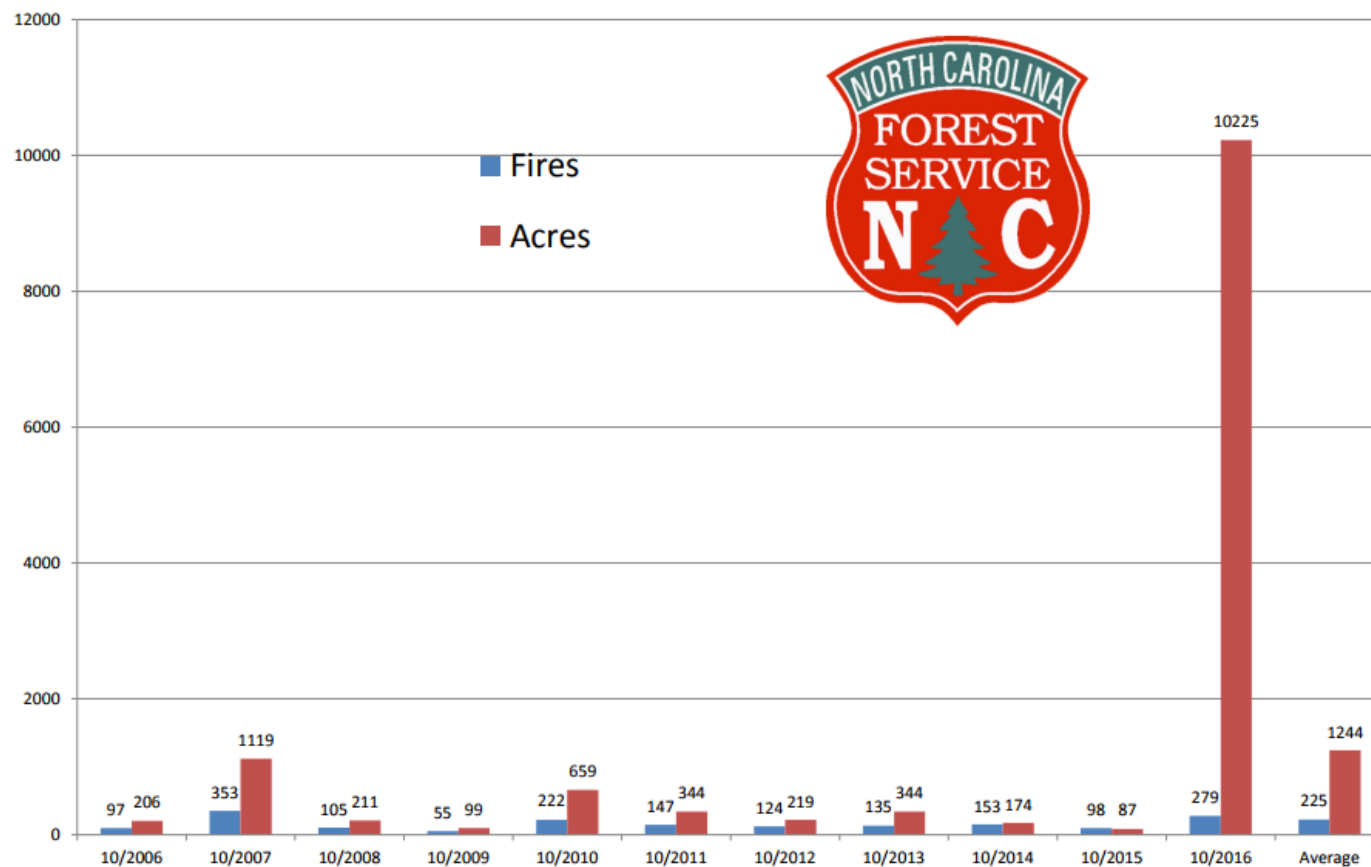




October Wildfires

Ten Year Monthly Fire Averages
July 2015-July 2017

Fires in October, 2016 vs. ten year average (2006-2016)

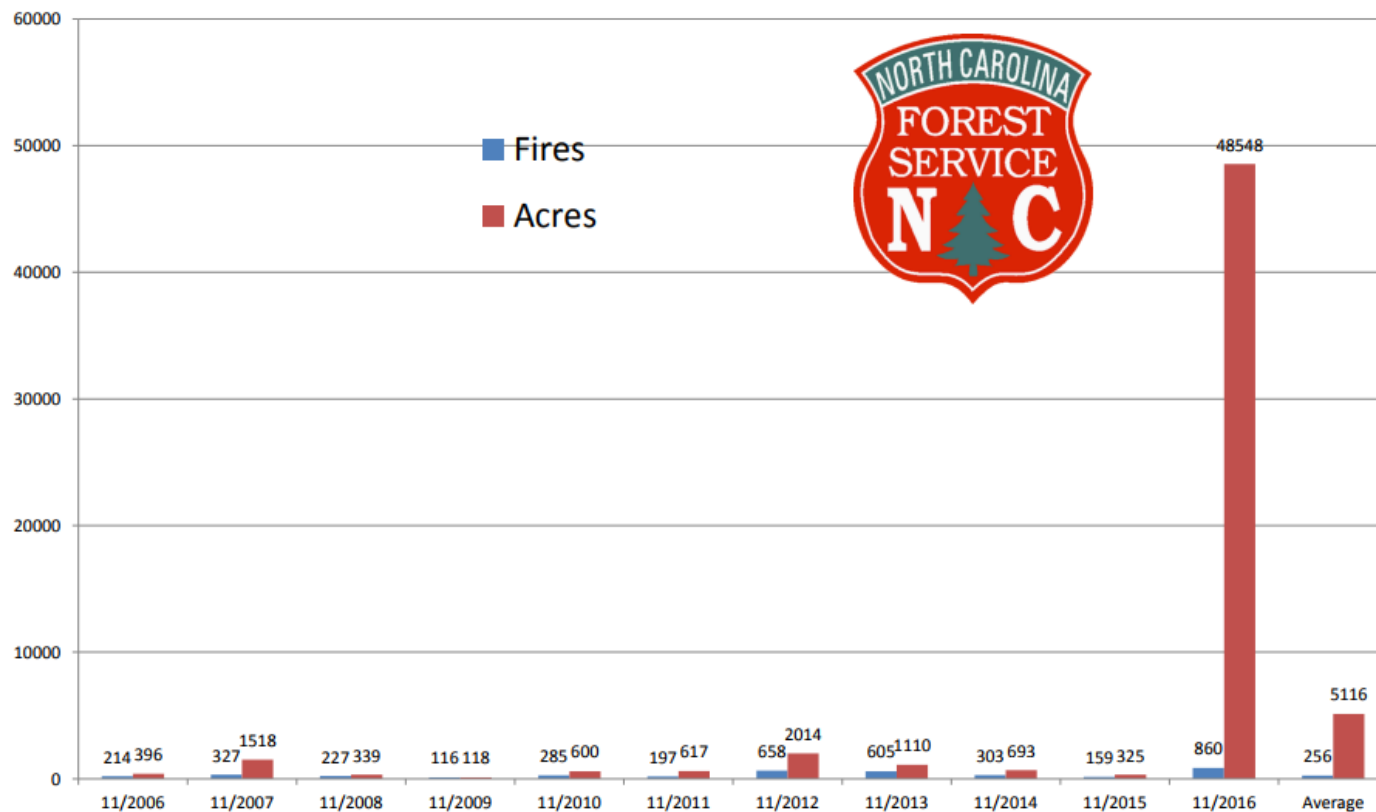




November Wildfires

Ten Year Monthly Fire Averages
July 2015-July 2017

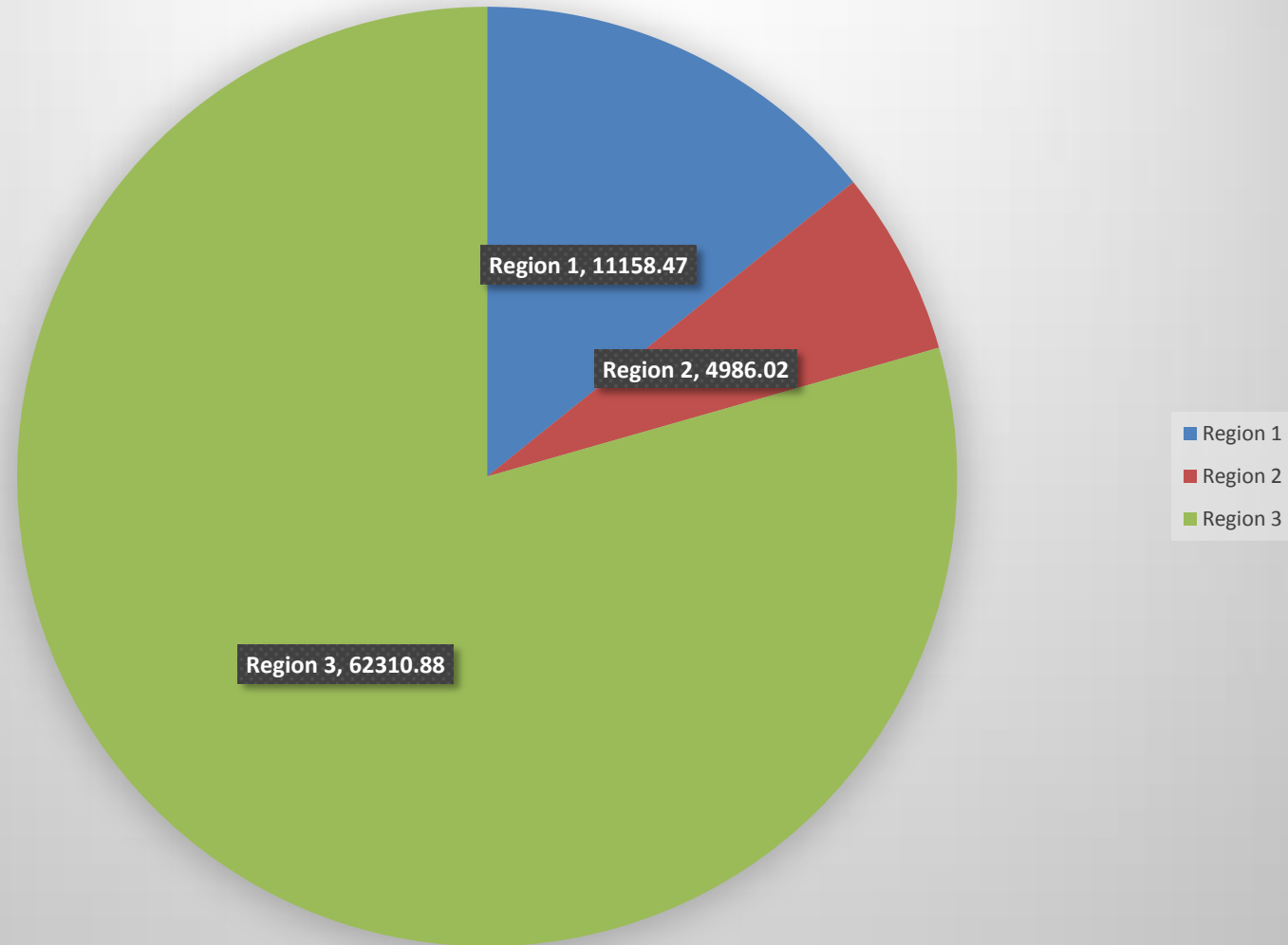
Fires in November, 2016 vs. ten year average (2006-2016)





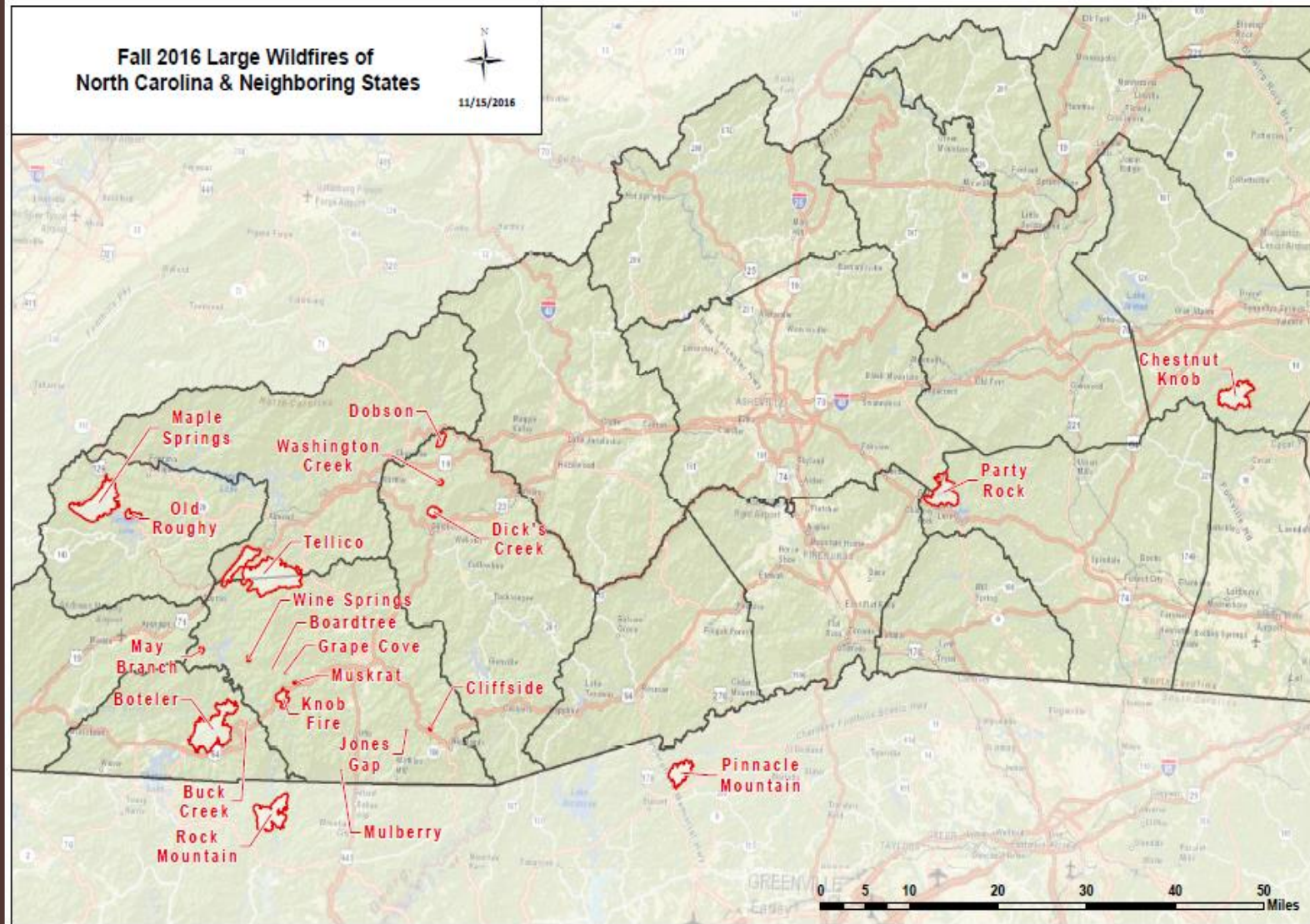
Wildfire Acres by Region

Total Acres Burned by Wildfire by NCFS Region





Western NC Fires Fall 2016





Major Challenges

Incident Complexity

Resource Availability

Managing Safety

Multiple Jurisdictions/Team Effort



Public Information





Aircraft Coordination





Safety-Mitigating Hazards

Blasting Crew
at Work to
remove dead
Hemlocks





Tactics

Crews
working to
keep lines
cleared from
leaf fall



Public Support



Questions?

