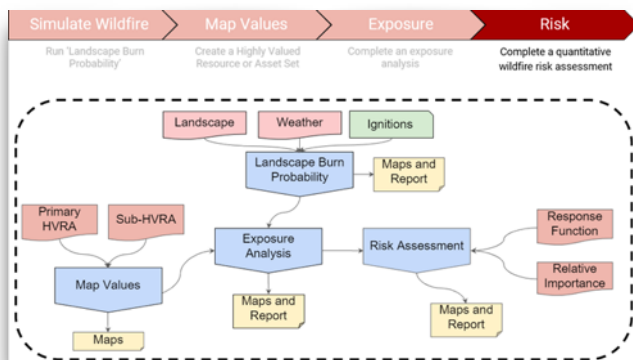


# Quantitative Wildfire Risk Assessment

Available in IFTDSS Today!

Interagency Fuel Treatment Decision Support System  
<https://iftdss.firenet.gov>

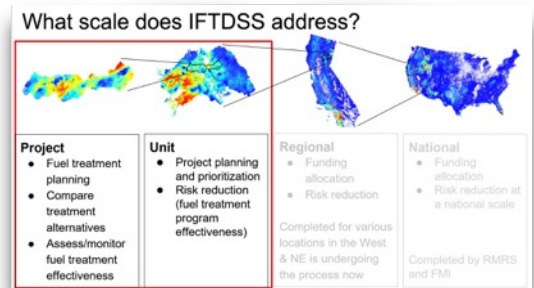
A workflow and tools to perform a Quantitative Wildfire Risk Assessment (QWRA) from the project to the unit scale is now available in IFTDSS. The process follows the steps outlined in GTR-315, [“A wildfire risk assessment framework for land and resource management.”](#)



- ✓ Create and edit Landscapes directly in IFTDSS
- ✓ Develop a set of Highly Valued Resources or Assets (HVRA) - choose from the National HVRA, upload local HVRA shapefiles or use nationwide data sets from IFTDSS.
- ✓ Run Landscape Burn Probability using a customized version of FlamMap developed specifically for IFTDSS
- ✓ Complete an Exposure Analysis - view outputs on the Map, generate reports

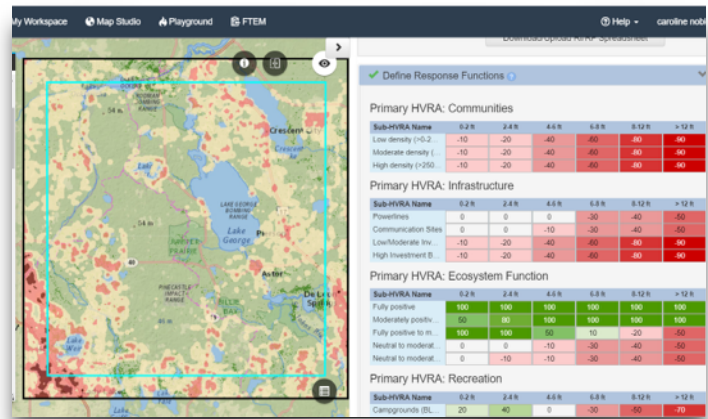
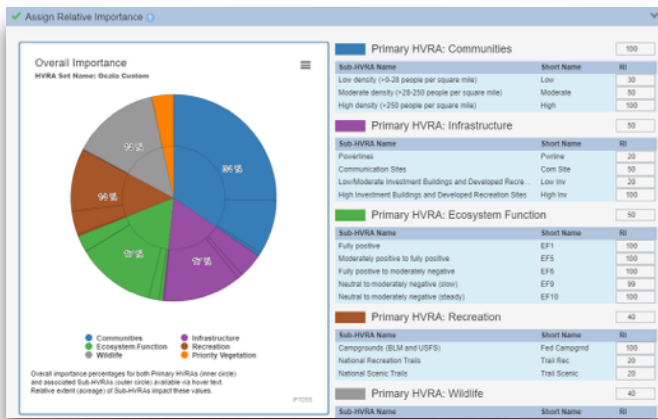
containing summary tables and charts, and download data to be used in further analysis outside of IFTDSS if needed

- ✓ Define HVRA Response Functions and Relative Importance directly within the application or upload a spreadsheet
- ✓ View the final Conditional and Expected Weighted Net Value Change outputs on the map and compare with underlying model outputs and HVRA's

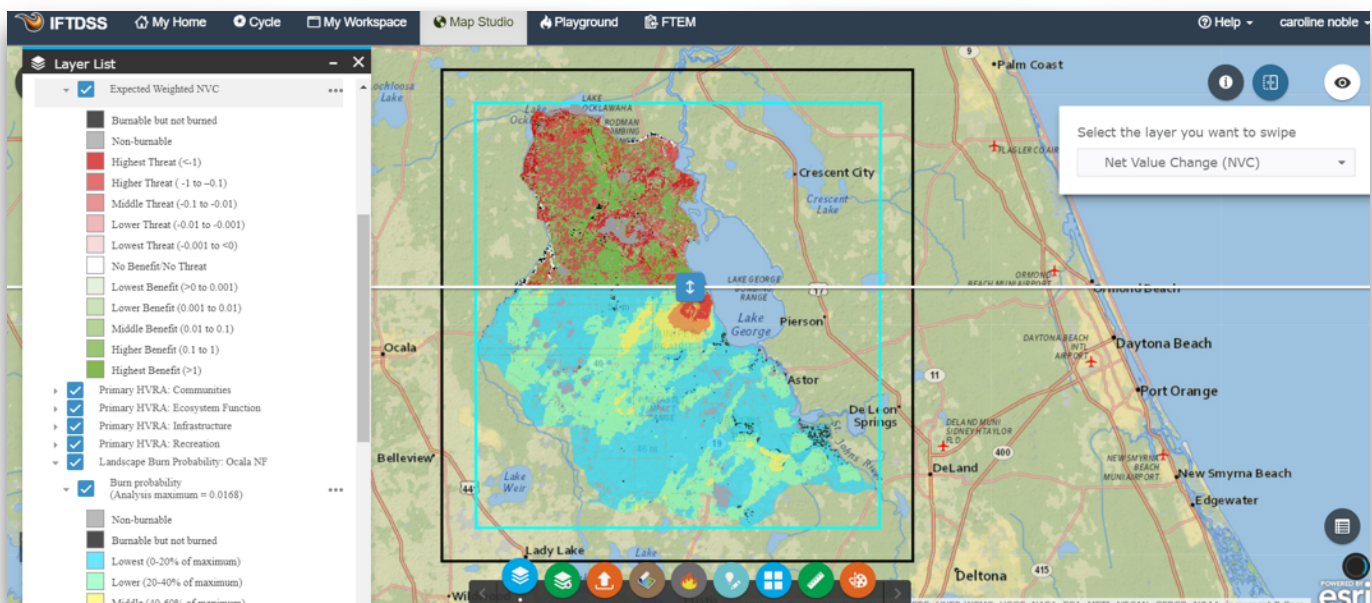


Conducting a QWRA makes land management decisions more effective by characterizing the predicted benefits and threats from fire on several, often overlapping, values across your landscape. Fuel treatment and pre-suppression response planning can benefit from a well thought out Risk Assessment, put the best available science to work for you!

## Risk calculations are completed in minutes and can be re-run with different scenarios quickly!



*IFTDSS is unique as it is the only place you can work with HVRAs, Response Functions, and Relative Importance with a map interface on the same screen*



*View your Risk Assessment outputs in the Map Studio to inform your decisions. Associated model runs and key data layers are available to add to your map. The Identify and Swipe Widgets allow you to understand how the model outputs and HVRAs impact risk.*

## For More Information

For more information about Quantitative Risk Assessment in IFTDSS contact the IFTDSS Team.

**Business Leads:** Tim Sexton USFS, Jason Fallon DOI

**Project Manager:** Henry Bastian

**IFTDSS Technical Leads:** Caroline Noble, Kim Ernstrom, Bre Schueller

**Risk Assessment Technical Lead:** Nicole Vaillant

